

Monday



Tuesday



Wednesday

Did you _____ (today/yesterday)?



Yes, I did. I .

No, I didn't.

Unit



2

Card 1 of 22

Last Week

Sunday	Monday	Tuesday	Wednesday	Thursday	Friday	Saturday
--------	--------	---------	-----------	----------	--------	----------

This Week

Sunday	Monday 	Tuesday 	Wednesday	Thursday	Friday	Saturday
--------	---	--	-----------	----------	--------	----------

Did you go to _____ on _____ day?



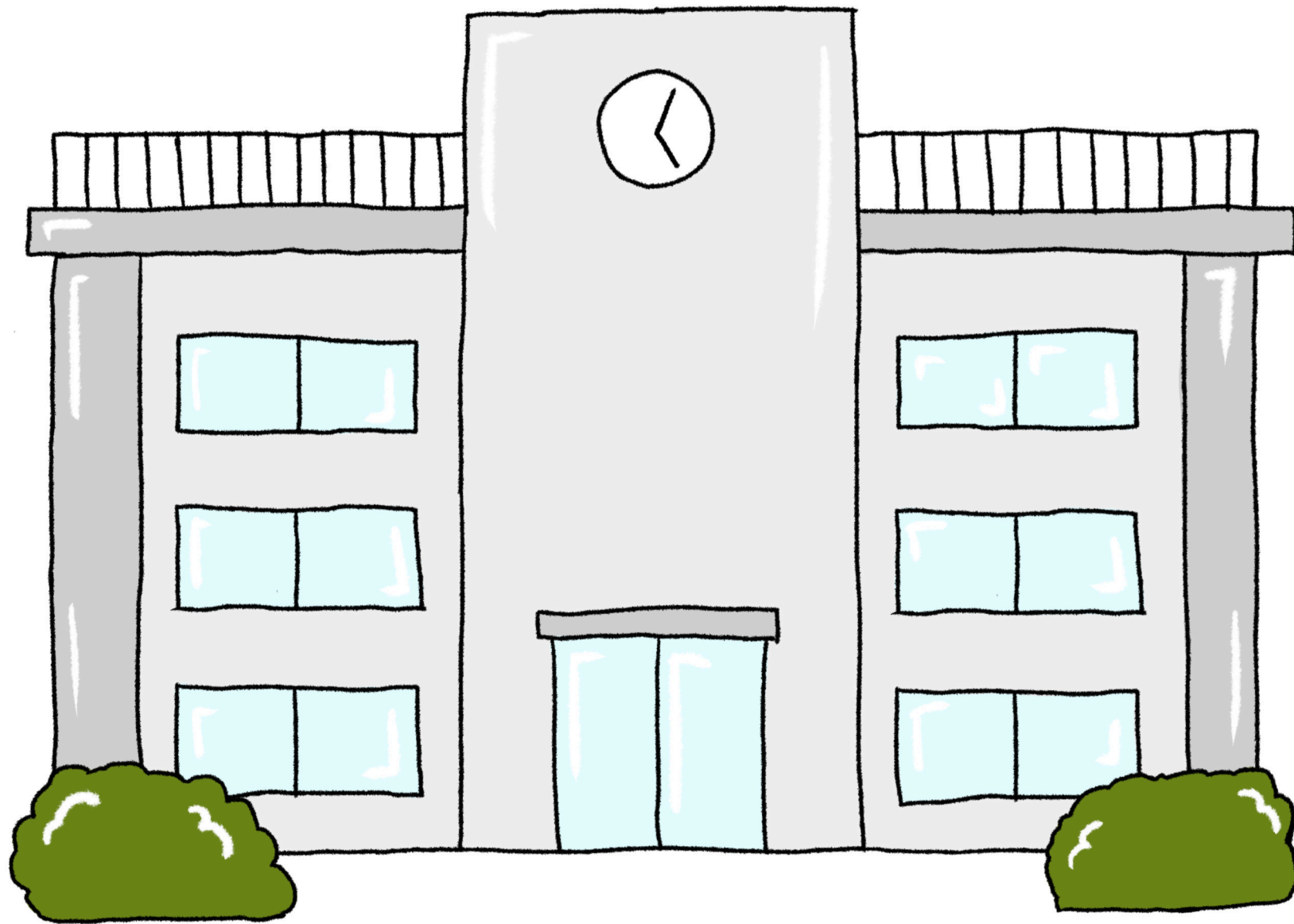
Yes, I did. I **went** to _____.

No, I didn't.

Unit

2

Card 2 of 22



Did you go to _____ on _____ day?

school

Yes, I did. I **went** to _____.

No, I didn't.

Unit

2

Card 3 of 22

English



Did you go to _____ on _____ day?

English school

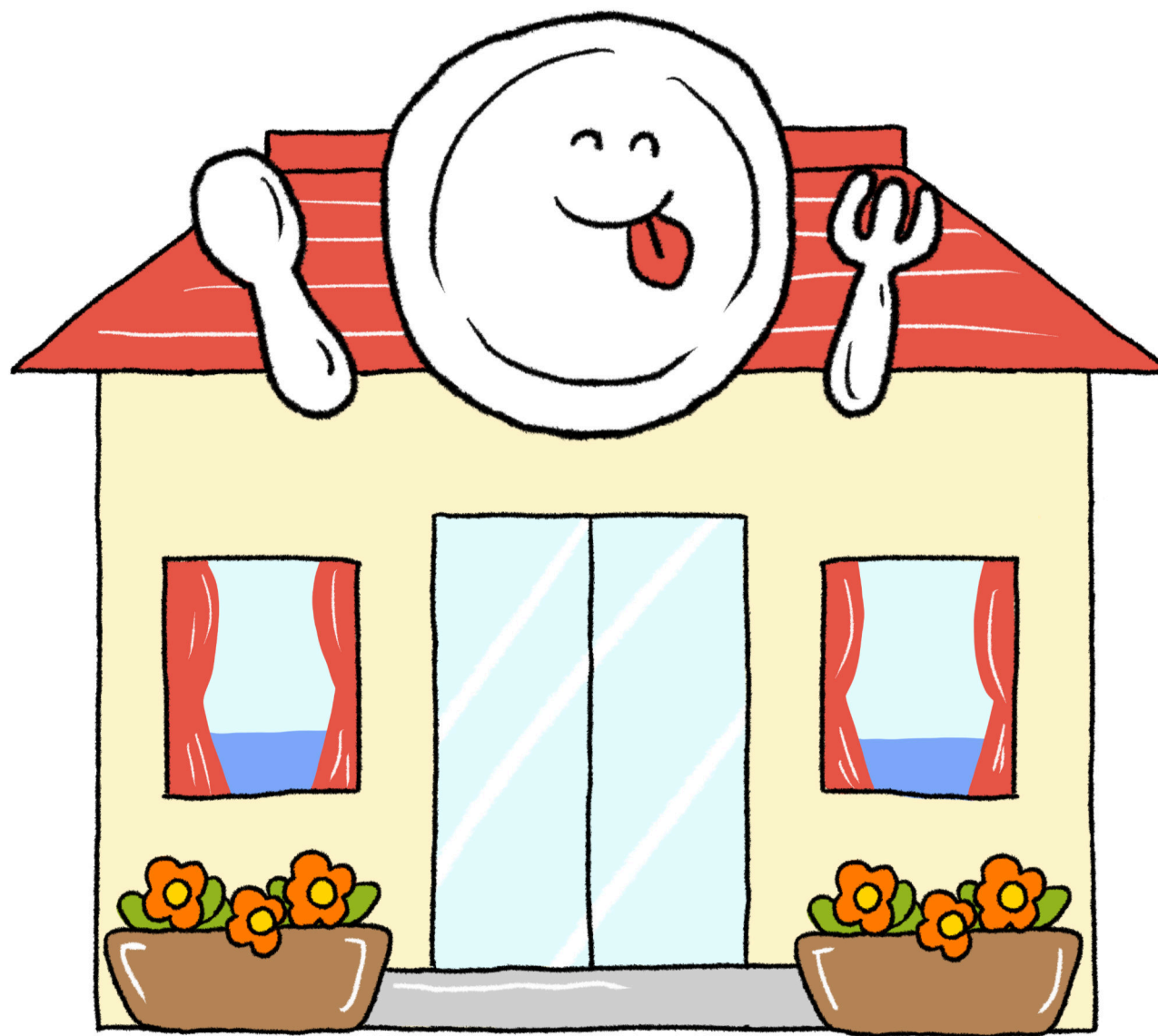
Yes, I did. I **went** to _____.

No, I didn't.

Unit

2

Card 4 of 22



Did you go to _____ on _____ day?

a restaurant

Yes, I did. I **went** to _____.

No, I didn't.

Unit

2

Card 5 of 22

©Hello Bear Publishing



Did you go to _____ on _____ day?

the park

Yes, I did. I **went** to _____.

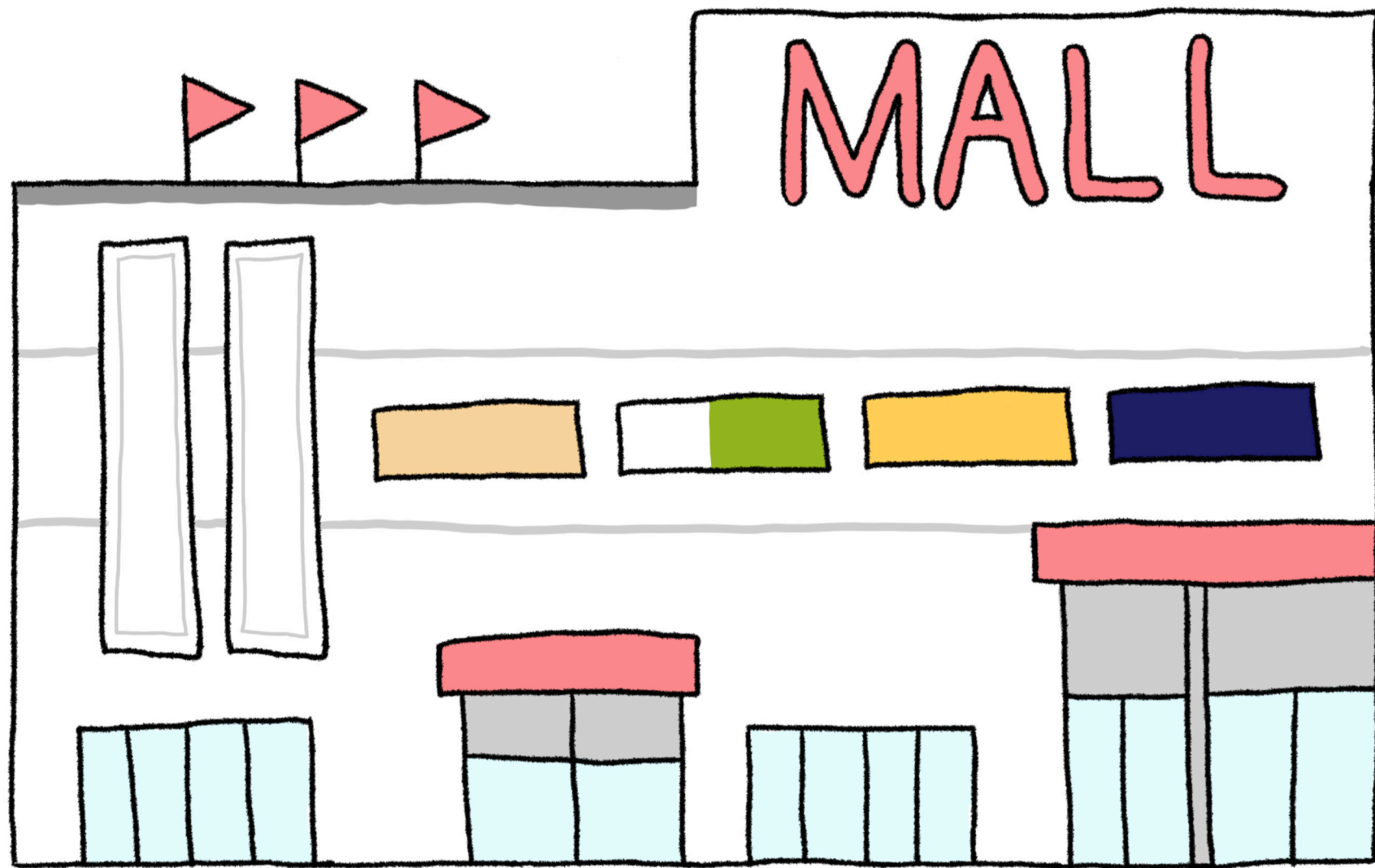
No, I didn't.

Unit

2

Card 6 of 22

©Hello Bear Publishing



Did you go to _____ on _____ day?

the shopping mall

Yes, I did. I **went** to _____.

No, I didn't.

Unit

2

Card 7 of 22

©Hello Bear Publishing

BOOKS



Did you go to _____ on _____ day?

the book shop

Yes, I did. I **went** to _____.

No, I didn't.

Unit

2

Card 8 of 22



Did you go to _____ on _____ day?

the convenience store

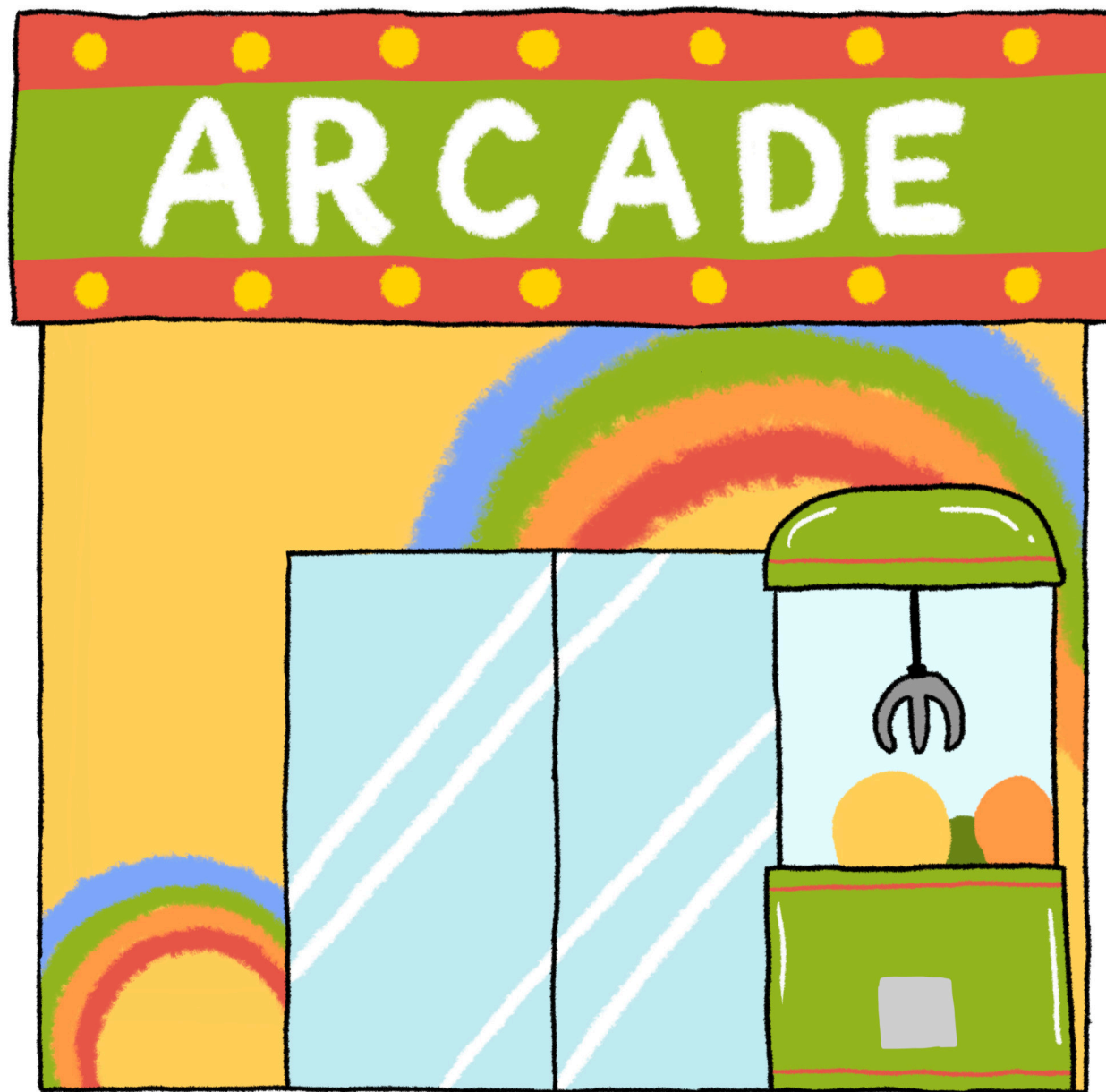
Yes, I did. I **went** to _____.

No, I didn't.

Unit

2

Card 9 of 22



Did you go to _____ on _____ day?

the arcade

Yes, I did. I **went** to _____.

No, I didn't.

Unit

2

Card 10 of 22

©Hello Bear Publishing



Did you go to _____ on _____ day?

a friend's house

Yes, I did. I **went** to _____.

No, I didn't.

Unit

2

Card 11 of 22



Did you go to _____ on _____ day?

the candy shop

Yes, I did. I **went** to _____.

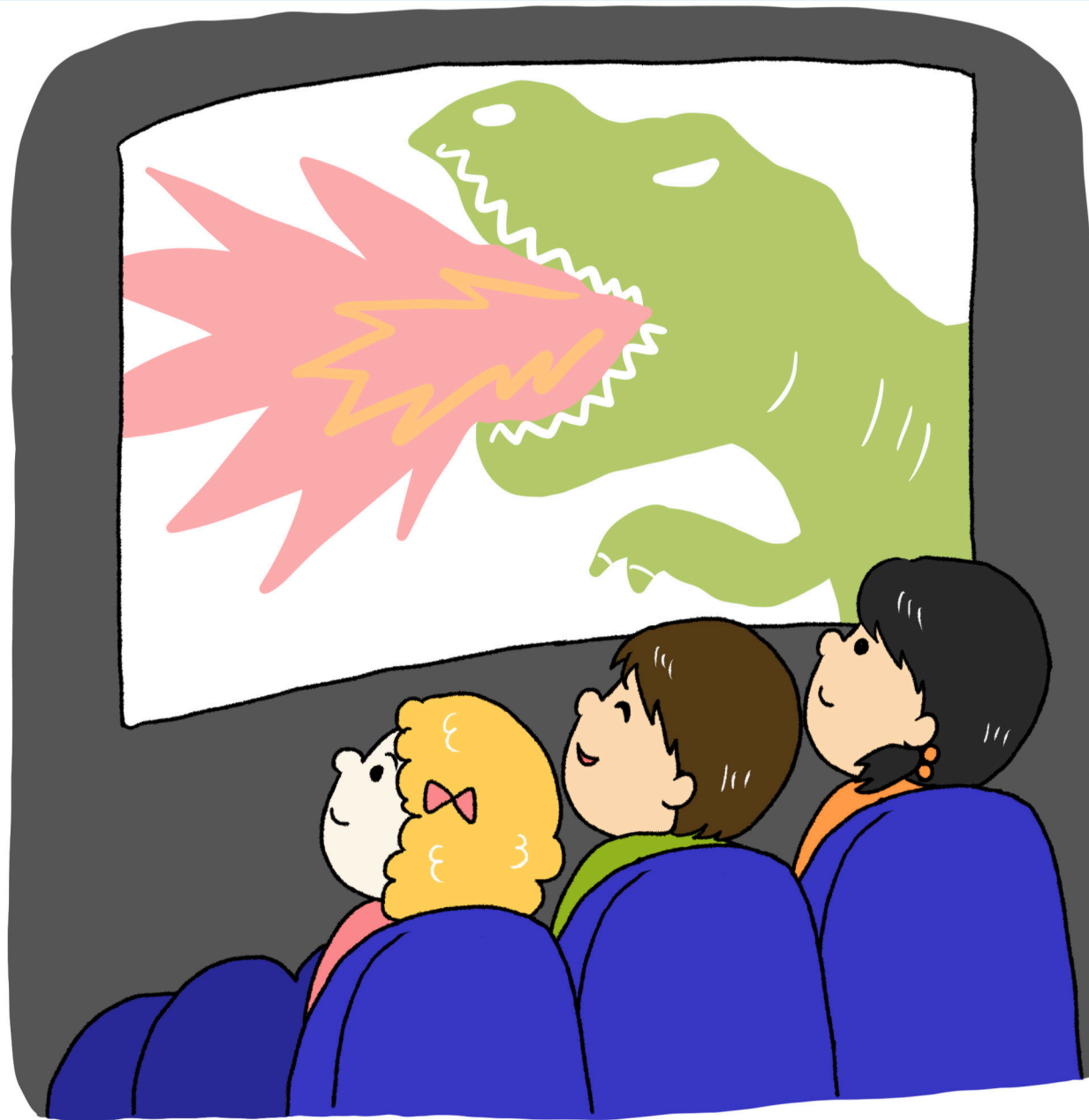
No, I didn't.

Unit

2

Card 12 of 22

©Hello Bear Publishing



Did you _____ (today/yesterday)?

watch a movie

Yes, I did. I watched a movie.

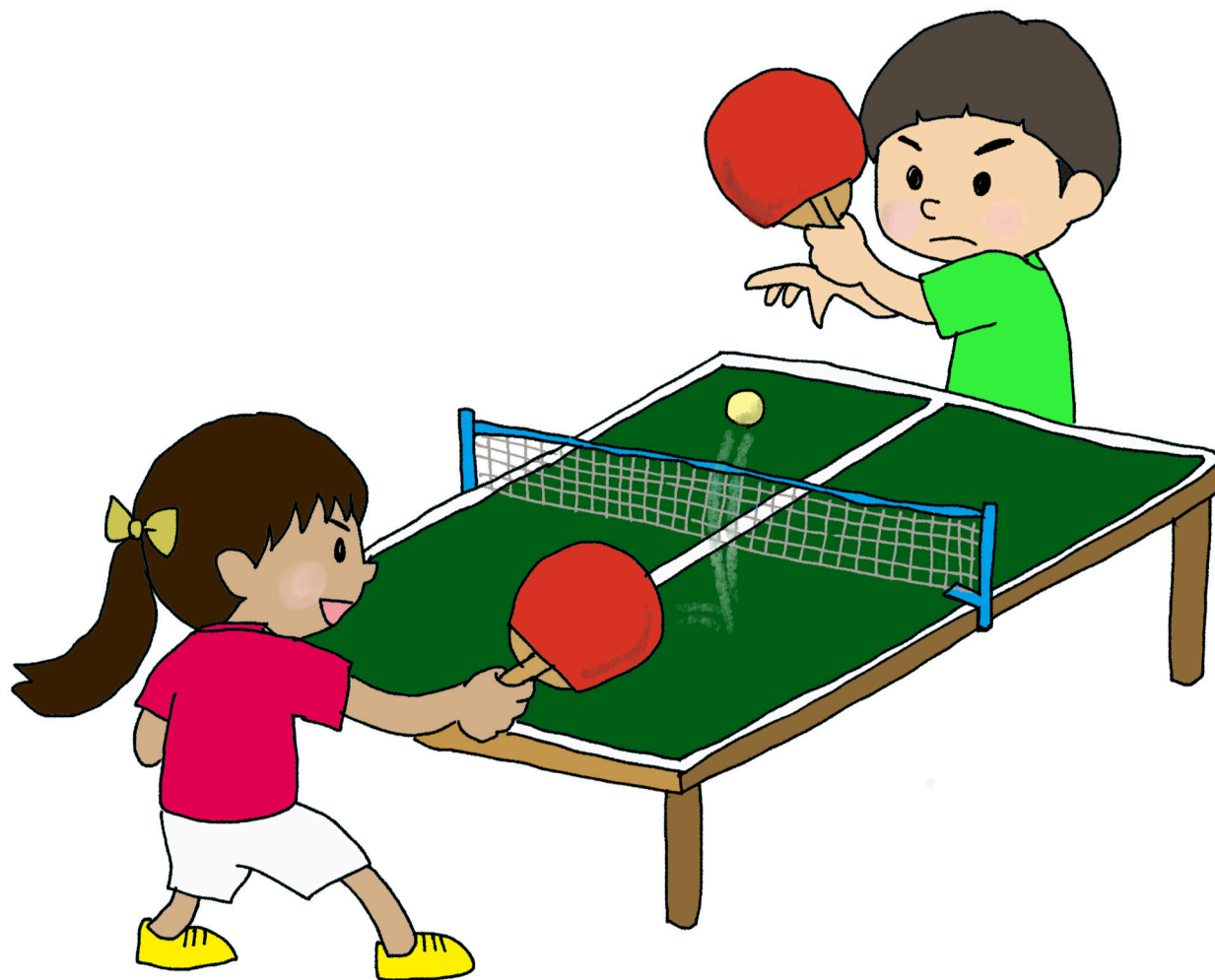
No, I didn't.

Unit

2

Card 13 of 22

©Hello Bear Publishing



Did you _____ (today/yesterday)?

play ping pong

Yes, I did. I play^{ed} ping pong.

No, I didn't.

Unit

2

Card 14 of 22



Did you _____ (today/yesterday)?

practice the recorder

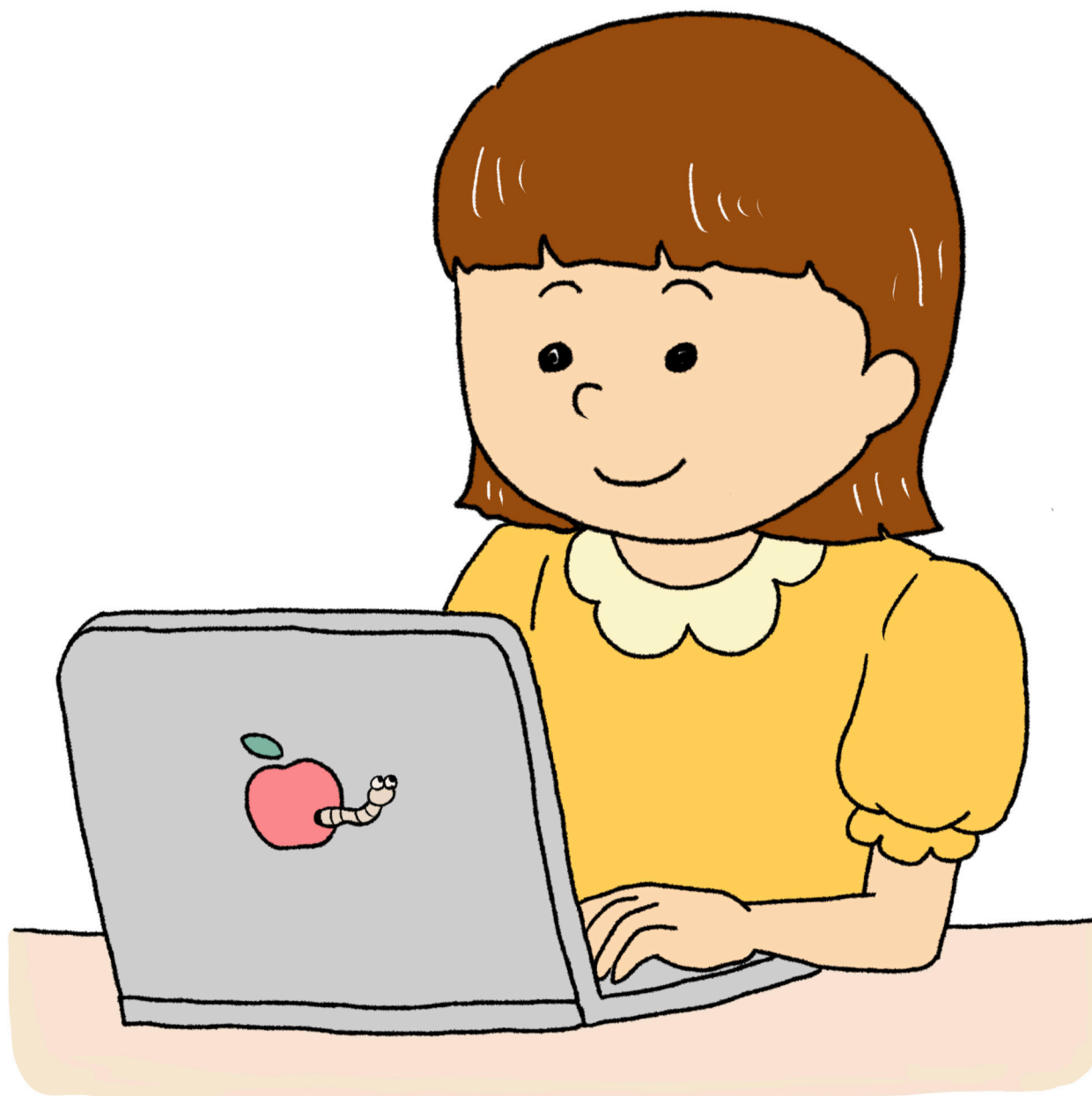
Yes, I did. I practiced the recorder.

No, I didn't.

Unit

2

Card 15 of 22



Did you _____ (today/yesterday)?

use the computer

Yes, I did. I used the computer.

No, I didn't.

Unit

2

Card 16 of 22

©Hello Bear Publishing



Did you _____ (today/yesterday)?

jump rope

Yes, I did. I jump^{ed} rope.

No, I didn't.

Unit

2

Card 17 of 22



Did you _____ (today/yesterday)?

walk the dog

Yes, I did. I walk^{ed} the dog.

No, I didn't.

Unit

2

Card 18 of 22

©Hello Bear Publishing



Did you _____ (today/yesterday)?

wash the dishes

Yes, I did. I wash^{ed} the dishes.

No, I didn't.

Unit

2

Card 19 of 22

©Hello Bear Publishing



Did you _____ (today/yesterday)?

help your grandma

Yes, I did. I helped my grandma.

No, I didn't.

Unit

2

Card 20 of 22

©Hello Bear Publishing



Did you _____ (today/yesterday)?

study

Yes, I did. I studied.

No, I didn't.

Unit

2

Card 21 of 22

©Hello Bear Publishing



Did you _____ (today/yesterday)?

clean the house

Yes, I did. I cleaned the house.

No, I didn't.

Unit

2

Card 22 of 22

©Hello Bear Publishing